



## Note

Algae 2023, 38(2): 151-157

<https://doi.org/10.4490/algae.2023.38.6.2>

Open Access



# Effects of salinity and irradiance on early developmental stages of *Grateloupia turuturu* (Halymeniaceae, Rhodophyta) tetrasporophytes

Jae Woo Jung<sup>1</sup>, Qikun Xing<sup>1,2</sup>, Ji-Sook Park<sup>1,2</sup>, Charles Yarish<sup>3</sup> and Jang K. Kim<sup>1,2,\*</sup>

<sup>1</sup>Department of Marine Science, Incheon National University, Incheon 22012, Korea

<sup>2</sup>Research Institute of Basic Sciences, Incheon National University, Incheon 22012, Korea

<sup>3</sup>Department of Ecology & Evolutionary Biology, University of Connecticut, Stamford, CT 06901-2315, USA

*Grateloupia turuturu* is a red alga with a flat but firm slippery thallus. Throughout its lifetime, this alga experiences a wide range of environmental stresses in the intertidal rocky shores. The aim of this study is to investigate the effect of salinity and irradiance on the early developmental stages of *G. turuturu* tetrasporophytes. The released carpospores were cultivated at different salinities (S = 15, 25, and 35) and irradiances (50, 100, and 200  $\mu\text{mol photons m}^{-2} \text{s}^{-1}$ ). Germination of carpospores and development of juvenile tetrasporophytes were observed every 5 days and recorded by a digital camera. Discoid crusts were formed at all conditions within 5 days. The discoid crusts at 200  $\mu\text{mol photons m}^{-2} \text{s}^{-1}$  died within 20 days regardless the salinity. The discoid crusts at S = 35 also died at all irradiance conditions within 25 days. Except for those at S = 35 and 200  $\mu\text{mol photons m}^{-2} \text{s}^{-1}$ , the discoid crusts reached about 8,000–9,000  $\mu\text{m}^2$  by day 20. Regardless of irradiance, the upright thalli formation rate from discoid crusts was 85 and 10% at S = 15 and S = 25, respectively. These results suggest that salinity and irradiance are important factors influencing early developmental stages of *G. turuturu*.

**Keywords:** discoid crust; *Grateloupia turuturu*; irradiance; salinity; tetrasporophyte; upright thalli

## INTRODUCTION

*Grateloupia turuturu* Y. Yamada 1941 (Halymeniaceae, Rhodophyta) is a red macroalga native to East Asia (Dennis et al. 2010, Capistrant-Fossa and Brawley 2019). It has a worldwide distribution and is considered an invasive species in many parts of the world (Villalard-Bohnsack and Harlin 1997, 2001, Saunders and Withall 2006, D'Archino et al. 2007, de Azevedo et al. 2015, Bolton et al. 2016, Kraemer et al. 2017, Petrocelli et al. 2020). This alga has slippery blades that range from a dark red to pink to red-tinted brown, with extremely variable morphologies occurring in intertidal and subtidal environments (Simon et al. 1999, 2001, Lafontaine et al. 2011). They have a dis-

coid holdfast (<5 mm wide), with a short (<1.5 mm long) cylindrical stipe, which widens out into a flattened blade (Villalard-Bohnsack and Harlin 1997).

In Asia, *G. turuturu* is considered to be an economically important species. It is rich in dietary fiber, protein, and vitamins (Lordan et al. 2011). Additionally, some chemical compounds from *G. turuturu* can be used for antibacterial and anti-microfouling applications (Plouguerné et al. 2008, Cardoso et al. 2019).

*Grateloupia turuturu* grows slowly during the winter with little changes in length, standing crop, and density in Korea. It has an isomorphic haplo-diplontic life cycle



This is an Open Access article distributed under the terms of the Creative Commons Attribution Non-Commercial License (<http://creativecommons.org/licenses/by-nc/3.0/>) which permits unrestricted non-commercial use, distribution, and reproduction in any medium, provided the original work is properly cited.

Received March 25, 2023, Accepted June 2, 2023

\*Corresponding Author

E-mail: [jang.kim@inu.ac.kr](mailto:jang.kim@inu.ac.kr)

Tel: +82-32-835-8877, Fax: +82-32-835-0806

(Cardoso et al. 2019). It is a prolific spore producer from either the gametophyte or tetrasporophyte stages. The sporelings develop into perennating crusts, from which blades can be repeatedly produced (Harlin and Villalard-Bohnsack 2001, Shao et al. 2004). Standing crop biomass and density increases during the spring (Araújo et al. 2011). After the carpospores are released, discoid crusts are formed by irregular division of germinated carpospores (Wang et al. 2012).

Temperature, salinity, and irradiance have significant effects on the development of discoid crusts and the growth of upright thalli in *Grateloupia qingdaoensis* (Liu et al. 2020). *Grateloupia turuturu* survives well in temperatures from 4 to 28°C, and in salinities ranging from 15–37 (Simon et al. 2001). Carpospores are widely used for seedlings in its aquaculture because they are released in abundance from cystocarps (Glenn et al. 1996, Mantri et al. 2009). Moreover, the specific growth rate of crusts and thalli developed from carpospores was higher than that of the crusts developed from tetraspores of *G. subpectinata* (Adharini and Kim 2016). However, the effect of environmental conditions, including salinity and irradiance, on early developmental stages from *G. turuturu* carpospores is still relatively unknown (Wei et al. 2013). The aim of this study was to investigate the effects of salinity and irradiance on the germination of carpospores and the early developmental stages of tetrasporophyte in *G. turuturu*.

## MATERIALS AND METHODS

### Carpospores collection

The cystocarpic thalli of *G. turuturu* were collected from the intertidal rocky shores of Samcheok, Korea (36°26' N, 129°11' E). The salinity range at the collection site was from 22 to 26. The thalli were rinsed in filtered seawater and wiped with paper towels to remove epiphytes. The cystocarp thalli were excised by sterilized scalpel blades and then placed in between damp paper towels in the dark, overnight. To induce spore liberation, cystocarp thalli were placed in 250 mL Erlenmeyer flasks containing filtered and sterilized seawater with pH 7.5 and standard salinity condition ( $S = 35$ ). The carpospores were released in 2 days (Wang et al. 2012) and transferred to Petri dishes (150 mm × 15 mm) containing five slide glasses (25 mm × 25 mm) and von Stosch's enriched (VSE) medium (Ott 1965) with pH 7.5 and standard salinity condition ( $S = 35$ ). These dishes were then placed at 20°C with 50  $\mu\text{mol photons m}^{-2} \text{ s}^{-1}$  irradiance and 12 : 12 h (L : D) photoperiod.

After the settlement of carpospores on the glass slides, the slides were rinsed with filtered sterilized seawater to remove non-settled carpospores. The density of spores was about 16–18 spores per glass slide (2–3 spores  $\text{cm}^{-2}$ ). Five glass slides were transferred to new Petri dishes with VSE medium (Wang et al. 2012).

### Experimental treatments

Nine treatment combinations of salinity ( $S = 15, 25,$  and  $35$ ) and irradiance (50, 100, and 200  $\mu\text{mol photons m}^{-2} \text{ s}^{-1}$ ) were used. The experiment was performed at 20°C with a photoperiod of 12 : 12 h, L : D for 25 days. The VSE medium was renewed every 5 days. Each replicate was composed of one Petri dish with five slide glasses, each treatment combination had three replicates.

### Observations of early developmental stages

Development of tetrasporophyte germlings was observed every 5 days using a Nikon Ts2R microscope (Tokyo, Japan). Thirty discoid crusts were randomly selected from each Petri dish every 5 days and photographed with a KOPTIC HK6.3E3S digital camera (Yongin, Korea). The formation of discoid crusts and upright thalli were recorded, and the measurement of discoid crust area with highly pigmented regions was conducted using Image-J software (version 1.52a, <https://imagej.nih.gov/ij/>).

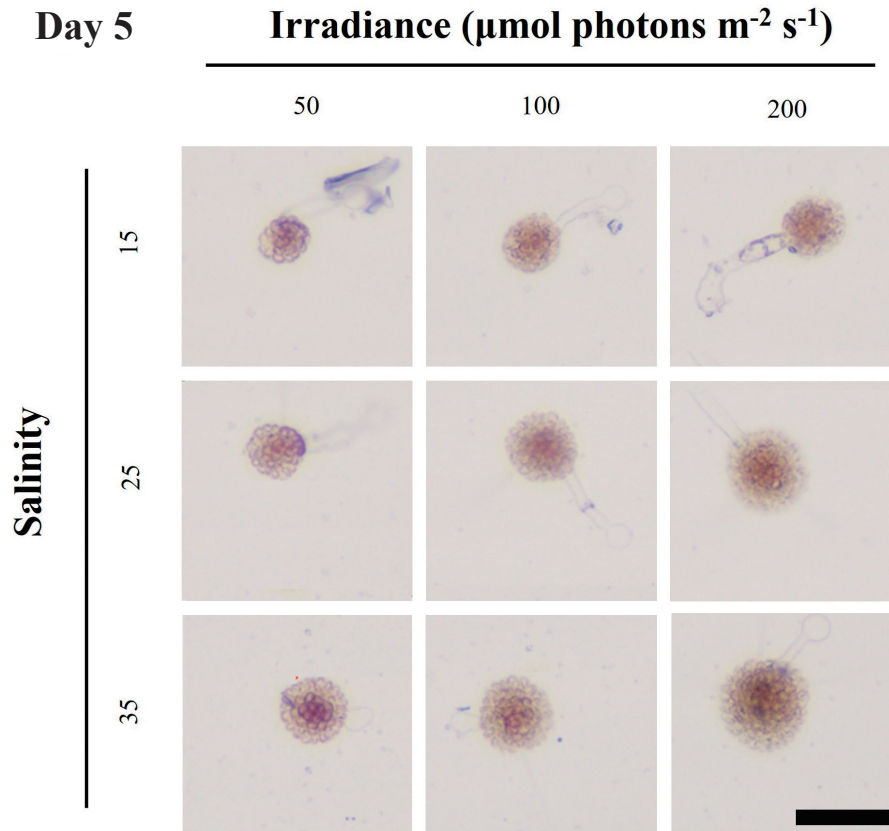
### Statistical analysis

Two-way ANOVA and Tukey's honest significance test ( $p < 0.05$ ) were conducted for the discoid crust area to test differences among treatment combinations. All data were checked for normality using Kolmogorov-Smirnov test and homogeneity of variance using Levene's test. The statistical analysis was performed on the statistical software SPSS version 25.0 (IBM Corp., Armonk, NY, USA).

## RESULTS AND DISCUSSION

### Formation of discoid crusts

The carpospores released from cystocarps were settled on the slide glasses within 2 days. After settlement, carpospores began to germinate and form discoid crusts at all treatment combinations within 5 days (Fig. 1). Similarly, Wei et al. (2013) reported that irradiance had no significant effect on the formation of discoid crusts from



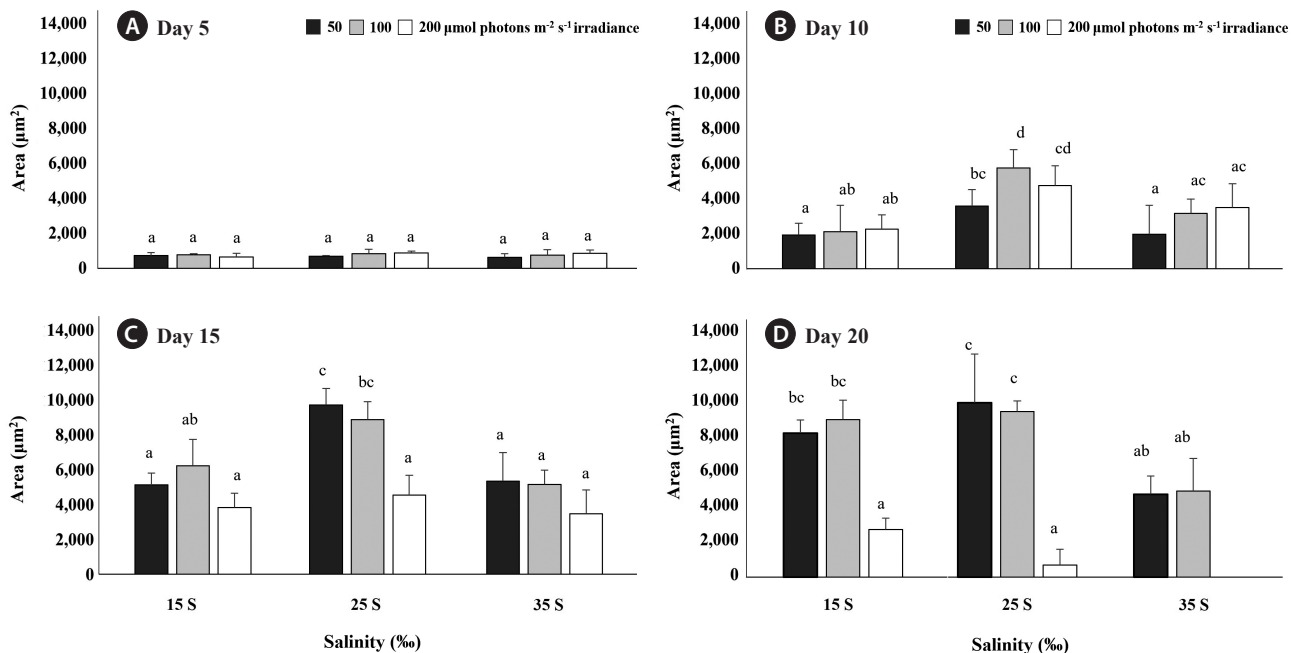
**Fig. 1.** Discoid crusts of *Grateloupia turuturu* for each treatment combination at day 5. Scale bar represents: 50  $\mu\text{m}$ .

filaments of *G. turuturu* (Wei et al. 2013). Carpospores of *G. qingdaoensis* germinated and grew into discoid crusts at the photosynthetically active radiation (PAR) ranged from 20 to 120  $\mu\text{mol photons m}^{-2} \text{s}^{-1}$  and salinity ranged from  $S = 20$  to  $S = 40$  (Adharini and Kim 2016). In the present study, similarly, carpospores of *G. turuturu* germinated at higher PAR (200  $\mu\text{mol photons m}^{-2} \text{s}^{-1}$ ) and lower salinity ( $S = 15$ ). The area of discoid crusts was not affected by salinity ( $p > 0.05$ ), irradiance ( $p > 0.05$ ), and interaction between salinity and irradiance ( $p > 0.05$ ) with the area of approximately 760  $\mu\text{m}^2$  (Figs 1 & 2A).

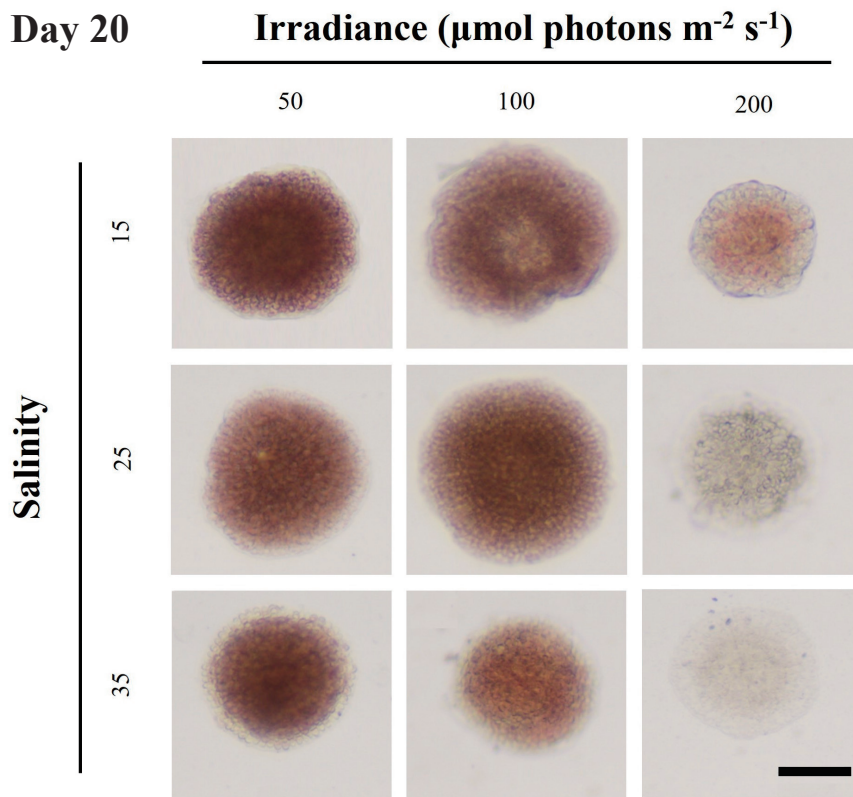
### Effects of salinity and irradiance on the growth of the discoid crust

At day 10, the growth of discoid crusts was significantly affected by salinity ( $p < 0.001$ ), irradiance ( $p < 0.001$ ), and interaction between salinity and irradiance ( $p = 0.047$ ). The area of discoid crusts was increased in all treatment combinations and greater at  $S = 25$  and 100  $\mu\text{mol photons m}^{-2} \text{s}^{-1}$  than at all other treatment combinations ( $p < 0.001$ ) (Fig. 2B). At day 15 and 20, the growth of discoid

crusts was significantly affected by salinity ( $p < 0.001$ ), irradiance ( $p < 0.001$ ), while interaction between salinity and irradiance did not affect the growth of discoid crusts ( $p > 0.05$ ). At day 15, the area of discoid crusts at 50 and 100  $\mu\text{mol photons m}^{-2} \text{s}^{-1}$  reached about 9,000  $\mu\text{m}^2$  at  $S = 25$ . However, at the same salinity, the area of discoid crusts at 200  $\mu\text{mol photons m}^{-2} \text{s}^{-1}$  was significantly less than 9,000  $\mu\text{m}^2$  ( $p < 0.001$ ) (Fig. 2C). Additionally, discoid crusts at 200  $\mu\text{mol photons m}^{-2} \text{s}^{-1}$  showed pigment degradation regardless the salinity. At day 20, the area of discoid crusts at 50 and 100  $\mu\text{mol photons m}^{-2} \text{s}^{-1}$  also reached about 8,000  $\mu\text{m}^2$  at  $S = 15$ . Furthermore, the area of discoid crusts stopped increasing at 50 and 100  $\mu\text{mol photons m}^{-2} \text{s}^{-1}$  at  $S = 25$  after day 15. However, discoid crusts at  $S = 35$  started to die at all irradiances by day 20 ( $p < 0.001$ ) (Fig. 2D). Especially, the combination of  $S = 35$  and 200  $\mu\text{mol photons m}^{-2} \text{s}^{-1}$  hastened the death of the discoid crusts compared to other conditions (Fig. 3). Environmental factors of original habitat, especially salinity, affected the early developmental stage of *G. turuturu*. Salinity of 35 is normal in oceanic environments, but discoid crusts of *G. turuturu* at this salinity started to die at all irradiances at

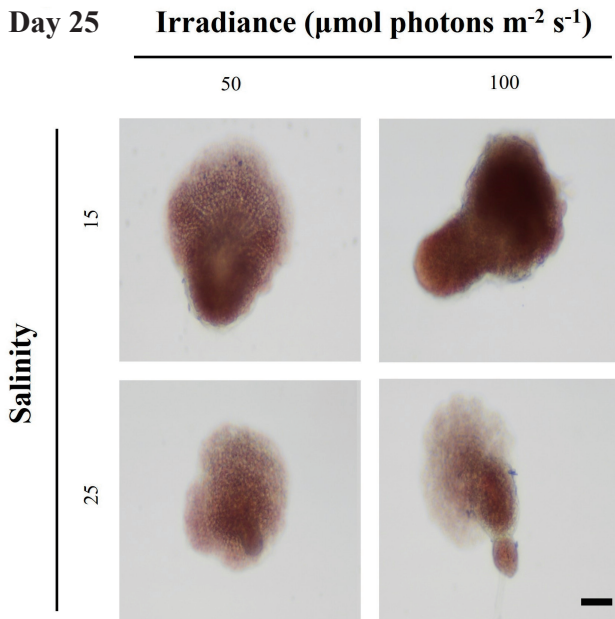


**Fig. 2.** Randomly selected 30 *Grateloupia turuturu* discoid crust areas of each treatment combinations salinity (S = 15, 25, and 35) and irradiance (50, 100, and 200  $\mu\text{mol photons m}^{-2} \text{s}^{-1}$ ) at day 5 (A), day 10 (B), day 15 (C), and day 20 (D). Values are means  $\pm$  standard errors. Different letters represented significant difference of each day ( $p < 0.05$ ).



**Fig. 3.** *Grateloupia turuturu* discoid crusts of each treatment combinations at day 20. Scale bar represents: 50  $\mu\text{m}$ .





**Fig. 4.** Upright thalli formation of *Grateloupia turuturu* in different treatments at day 25. Scale bar represents: 50  $\mu\text{m}$ .

day 20 in the present study, interestingly,  $S = 25$  enhanced the growth of discoid crust compared to salinity of 35 under 50 and 100  $\mu\text{mol photons m}^{-2} \text{s}^{-1}$  from day 10 to day 15. The salinity of 25 corresponds with the salinity at the collection site. This result implies the adaptation of this alga to the local environment, where freshwater influxes occur. Similar phenomenon was also found in *Caloglossa leprieurii* and *Bostrychia radicans* (Yarish et al. 1979, 1980), and in *Gracilaria* (Yu et al. 2013). Genetic structure differences were observed between estuarine populations of *Caloglossa* and *Bostrychia* (Yarish et al. 1979) and for *Furcellaria lumbricalis* from Atlantic Ocean ( $S = 35$ ) and brackish Baltic Sea ( $S = 3.6$ ), suggesting salinity of original habitat affected physiological responses through the differences of genetic structure (Korpelainen 2016). Additionally, the tolerance to temperature and salinity varies between sporelings and mature thalli of *Grateloupia doryphora* (sensu lato *G. turuturu*, Rodrigo and Robaina 1997), suggesting the life stage also affects stress tolerance.

Irradiance also affects the growth of discoid crusts. Except for discoid crusts at  $S = 25$  and 100  $\mu\text{mol photons m}^{-2} \text{s}^{-1}$  at day 10, there was no differences of discoid crust areas between 50 and 100  $\mu\text{mol photons m}^{-2} \text{s}^{-1}$  at  $S = 15$ , 25, and 35. However, at 200  $\mu\text{mol photons m}^{-2} \text{s}^{-1}$  caused growth inhibition with pigment degradation occurred. In previous studies, discoid crusts grown from carpospores

of *Grateloupia constrictata* and *G. qingdaoensis* had slow growth under high irradiances (Ding et al. 2020, Liu et al. 2020). Similarly, excessive irradiance caused pigment degradation of discoid crusts of *Grateloupia asiatica* (Adharini and Kim 2014).

### Formation of upright thalli

Iima et al. (1995) reported that upright thalli of *Grateloupia acuminata* were formed when the discoid crust reached a certain size. In case of *Grateloupia asiatica*, upright thalli were formed when discoid crust were composed of about six layers of cells (Adharini and Kim 2014). According to our observations, discoid crusts with the area of approximately 8,000–9,000  $\mu\text{m}^2$  started to form upright thalli at day 25 (Fig. 4). Wei et al. (2013) found that discoid crusts of *G. turuturu* with 200–300  $\mu\text{m}$  (30,000–70,000  $\mu\text{m}^2$ ) in diameter developed upright thalli. It is unclear why these size differences of discoid crusts were observed in different studies, and thus, further studies are needed to confirm the size required to develop upright thalli in *G. turuturu*.

The formation rate of upright thalli from discoid crusts was 85 and 10% at  $S = 15$  and  $S = 25$ , respectively, regardless of irradiance. Wei et al. (2013) reported that the upright thalli formation time of *G. turuturu* was faster at 90  $\mu\text{mol photons m}^{-2} \text{s}^{-1}$  than those at lower irradiance under the same temperature. In the present study, irradiance did not affect the formation time of upright thalli. Although the growth of discoid crust at  $S = 25$  was faster than at  $S = 15$ , the formation rate of upright thalli was significantly higher at  $S = 15$  than  $S = 25$ . This result suggests that the main factor affecting the formation of upright thalli is salinity. However, the present study did not measure the growth of the upright thalli.

### CONCLUSION

This is the first study looking at the combined effects of salinity and irradiance, on early development stages *G. turuturu*. The combination of high salinity ( $S = 35$ ) and high irradiance (200  $\mu\text{mol photons m}^{-2} \text{s}^{-1}$ ) inhibited the growth of discoid crusts. The minimum area of 8,000  $\mu\text{m}^2$  was required to develop upright thalli. The upright thalli formation was only affected by salinity. The present study also suggests that the optimal salinity conditions for the early development of *G. turuturu* may be site dependent, but this needs to be confirmed using different populations from different salinity conditions.

## ACKNOWLEDGEMENTS

This study was supported by the National Research Foundation of Korea (NRF) funded by the Ministry of Education (NRF-2017R1A6A1A06015181 and NRF-2022R1I1A1A01071940), and by the Ministry of Science and ICT (2022R1A2C1011394).

## CONFLICTS OF INTEREST

The authors declare that they have no potential conflicts of interest.

## REFERENCES

- Adharini, R. I. & Kim, H. G. 2014. Developmental pattern of crust into upright thalli of *Grateloupia asiatica* (Halymeniaceae, Rhodophyta). *J. Appl. Phycol.* 26:1911–1918.
- Adharini, R. I. & Kim, H. G. 2016. Growth of gametophytes and sporophytes of *Grateloupia subpectinata* (Rhodophyta) in culture. *Ocean Sci. J.* 51:477–483.
- Araújo, R., Violante, J., Pereira, R., Abreu, H., Arenas, F. & Sousa-Pinto, I. 2011. Distribution and population dynamics of the introduced seaweed *Grateloupia turuturu* (Halymeniaceae, Rhodophyta) along the Portuguese coast. *Phycologia* 50:392–402.
- Bolton, J. J., De Clerck, O., Francis, C. M., Siyanga-Tembo, F. & Anderson, R. J. 2016. Two newly discovered *Grateloupia* (Halymeniaceae, Rhodophyta) species on aquaculture rafts on the west coast of South Africa, including the widely introduced *Grateloupia turuturu*. *Phycologia* 55:659–664.
- Capistrant-Fossa, K. & Brawley, S. H. 2019. Unexpected reproductive traits of *Grateloupia turuturu* revealed by its resistance to bleach-based biosecurity protocols. *Bot. Mar.* 62:83–96.
- Cardoso, I., Cotas, J., Rodrigues, A., Ferreira, D., Osório, N. & Pereira, L. 2019. Extraction and analysis of compounds with antibacterial potential from the red alga *Grateloupia turuturu*. *J. Mar. Sci. Eng.* 7:220.
- D'Archino, R., Nelson, W. A. & Zuccarello, G. C. 2007. Invasive marine red alga introduced to New Zealand waters: first record of *Grateloupia turuturu* (Halymeniaceae, Rhodophyta). *N. Z. J. Mar. Freshw. Res.* 41:35–42.
- de Azevedo, C. A. A., Cassano, V., Júnior, P. A. H., Batista, M. B. & de Oliveira, M. C. 2015. Detecting the non-native *Grateloupia turuturu* (Halymeniales, Rhodophyta) in southern Brazil. *Phycologia* 54:451–454.
- Denis, C., Morancas, M., Li, M., Deniaud, E., Gaudin, P., Wielgosz-Collin, G., Barnathan, G., Jaouen, P. & Fleurence, J. 2010. Study of the chemical composition of edible red macroalgae *Grateloupia turuturu* from Brittany (France). *Food Chem.* 119:913–917.
- Ding, Y., Bian, Y., Wang, H., Liu, J., Li, J. & Wang, H. 2020. Early development, life history and ecological habits of *Grateloupia constricta* Li et Ding. *Acta Oceanol. Sin.* 39:155–161.
- Glenn, E. P., Moore, D., Fitzsimmons, K. & Azevedo, C. 1996. Spore culture of the edible red seaweed, *Gracilaria parvispora* (Rhodophyta). *Aquaculture* 142:59–74.
- Harlin, M. M. & Villalard-Bohnsack, M. 2001. Seasonal dynamics and recruitment strategies of the invasive seaweed *Grateloupia doryphora* (Halymeniaceae, Rhodophyta) in Narragansett Bay and Rhode Island Sound, Rhode Island, USA. *Phycologia* 40:468–474.
- Iima, M., Kinoshita, T., Kawaguchi, S. & Migita, S. 1995. Cultivation of *Grateloupia acuminata* (Halymeniaceae, Rhodophyta) by regeneration from cut fragments of basal crusts and upright thalli. *J. Appl. Phycol.* 7:583–588.
- Korpelainen, H. 2016. Comparative population genetics of red alga occupying different salinity conditions. In Hu, Z. M. & Fraser, C. (Eds.) *Seaweed Phylogeography: Adaptation and Evolution of Seaweeds under Environmental Change*. Springer, Dordrecht, pp. 331–344.
- Kraemer, G., Yarish, C., Kim, J. K., Zhang, H. & Lin, S. 2017. Life history interactions between the red algae *Chondrus crispus* (Gigartinales) and *Grateloupia turuturu* (Halymeniales) in a changing global environment. *Phycologia* 56:176–185.
- Lafontaine, N., Mussio, I. & Rusig, A.-M. 2011. Production and regeneration of protoplasts from *Grateloupia turuturu* Yamada (Rhodophyta). *J. Appl. Phycol.* 23:17–24.
- Liu, J., Li, J., Bian, Y., Ding, Y., Wang, H. & Wang, H. 2020. The morphological, developmental and molecular landscape of *Grateloupia qingdaoensis* Li et Ding. *J. Appl. Phycol.* 32:2093–2103.
- Lordan, S., Ross, R. P. & Stanton, C. 2011. Marine bioactives as functional food ingredients: potential to reduce the incidence of chronic diseases. *Mar. Drugs* 9:1056–1100.
- Mantri, V. A., Thakur, M. C., Kumar, M., Reddy, C. R. K. & Jha, B. 2009. The carpospore culture of industrially important red alga *Gracilaria dura* (Gracilariales, Rhodophyta). *Aquaculture* 297:85–90.
- Ott, F. D. 1965. Synthetic media and techniques for the xenic cultivation of marine algae and flagellate. *Va. J. Sci.* 16:205–218.
- Petrocelli, A., Alabiso, G., Cecere, E., Ricci, P. & Carlucci, R. 2020. Invasive or not? The case of *Grateloupia turuturu*

- (Rhodophyta, Halymeniales) in the Northern Ionian Sea (Mediterranean Sea). *Mar. Pollut. Bull.* 161:111748.
- Plouguerné, E., Hellio, C., Deslandes, E., Véron, B. & Stiger-Pouvreau, V. 2008. Anti-microfouling activities in extracts of two invasive algae: *Grateloupia turuturu* and *Sargassum muticum*. *Bot. Mar.* 51:202–208.
- Rodrigo, M. & Robaina, R. R. 1997. Stress tolerance of photosynthesis in sporelings of the red alga *Grateloupia doryphora* compared to that of Stage III thalli. *Mar. Biol.* 128:689–694.
- Saunders, G. W. & Withall, R. D. 2006. Collections of the invasive species *Grateloupia turuturu* (Halymeniales, Rhodophyta) from Tasmania, Australia. *Phycologia* 45:711–714.
- Shao, K., Wang, J. & Zhou, B. 2004. Production and application of filaments of *Grateloupia turuturu* (Halymeniaceae, Rhodophyta). *J. Appl. Phycol.* 16:431–437.
- Simon, C., Ar Gall, E. & Deslandes, E. 2001. Expansion of the red alga *Grateloupia doryphora* along the coasts of Brittany (France). *Hydrobiologia* 443:23–29.
- Simon, C., Ar Gall, E., Levavasseur, G. & Deslandes, E. 1999. Effects of short-term variations of salinity and temperature on the photosynthetic response of the red alga *Grateloupia doryphora* from Brittany (France). *Bot. Mar.* 42:437–440.
- Villalard-Bohnsack, M. & Harlin, M. M. 1997. The appearance of *Grateloupia doryphora* (Halymeniaceae, Rhodophyta) on the northeast coast of North America. *Phycologia* 36:324–328.
- Villalard-Bohnsack, M. & Harlin, M. M. 2001. *Grateloupia doryphora* (Halymeniaceae, Rhodophyta) in Rhode Island waters (USA): geographical expansion, morphological variations and associated algae. *Phycologia* 40:372–380.
- Wang, G., Jiang, C., Wang, S., Wei, X. & Zhao, F. 2012. Early development of *Grateloupia turuturu* (Halymeniaceae, Rhodophyta). *Chin. J. Oceanol. Limnol.* 30:264–268.
- Wei, X., Shuai, L., Lu, B., Wang, S., Chen, J. & Wang, G. 2013. Effects of temperature and irradiance on filament development of *Grateloupia turuturu* (Halymeniaceae, Rhodophyta). *J. Appl. Phycol.* 25:1881–1886.
- Yarish, C., Edwards, P. & Casey, S. 1979. Acclimation responses to salinity of three estuarine red algae from New Jersey. *Mar. Biol.* 51:289–294.
- Yarish, C., Edwards, P. & Casey, S. 1980. The effects of salinity, calcium and potassium variations on the growth of two estuarine red algae. *J. Exp. Mar. Biol. Ecol.* 47:235–249.
- Yu, C.-H., Lim, P.-E. & Phang, S.-M. 2013. Effects of irradiance and salinity on the growth of carpospore-derived tetrasporophytes of *Gracilaria edulis* and *Gracilaria tenuistipitata* var *liui* (Rhodophyta). *J. Appl. Phycol.* 25:787–794.