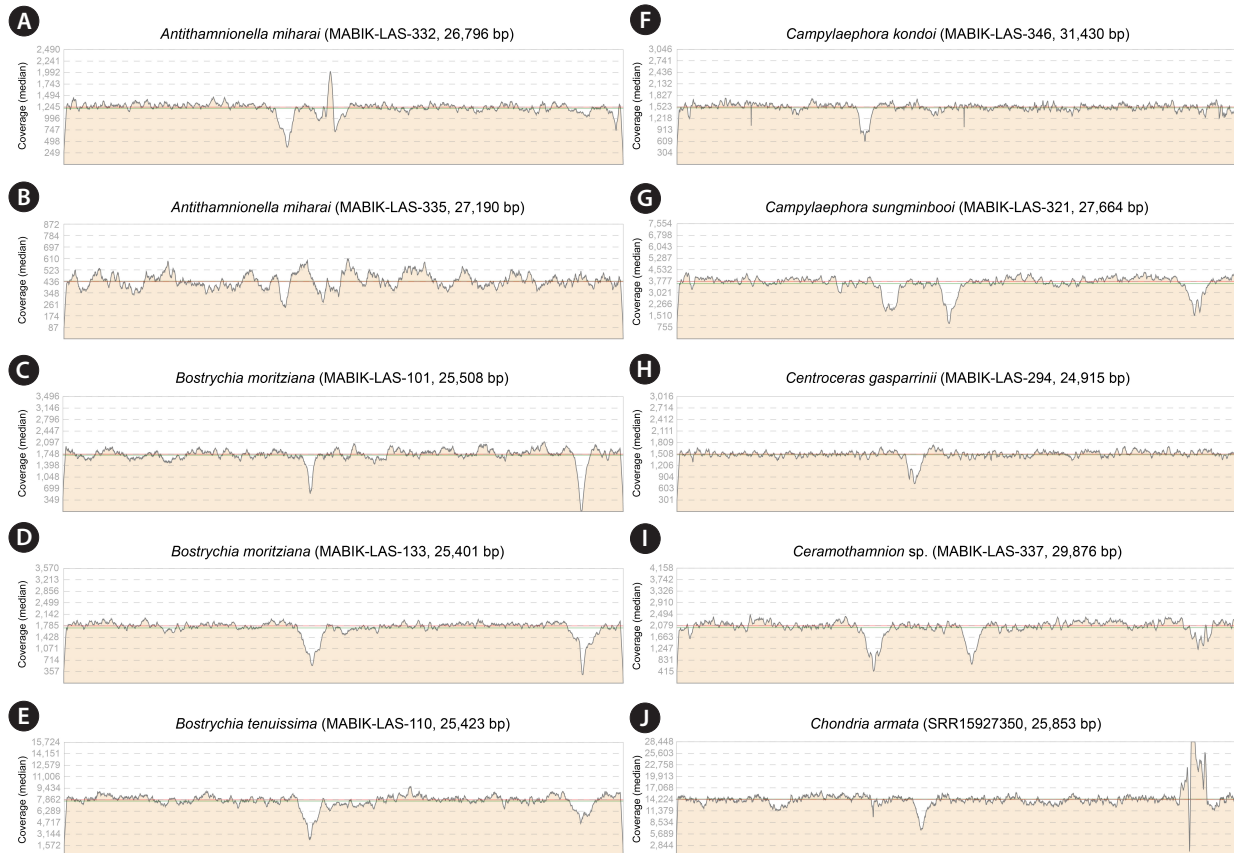


Supplementary Materials

Algae 2023, 38(4): 253-264

<https://doi.org/10.4490/algae.2023.38.12.2>

Open Access



Supplementary Fig. S1. Mapping coverage of established Ceramiales mitogenomes. (A) *Antithamnionella miharai* (MABIK-LAS-332). (B) *Antithamnionella miharai* (MABIK-LAS-335). (C) *Bostrychia moritziana* (MABIK-LAS-101). (D) *Bostrychia moritziana* (MABIK-LAS-133). (E) *Bostrychia tenuissima* (MABIK-LAS-110). (F) *Campylaeophora kondoi* (MABIK-LAS-346). (G) *Campylaeophora sungminbooi* (MABIK-LAS-321). (H) *Centroceras gasparrinii* (MABIK-LAS-294). (I) *Ceramothamnion* sp. (MABIK-LAS-337). (J) *Chondria armata* (SRR15927350).