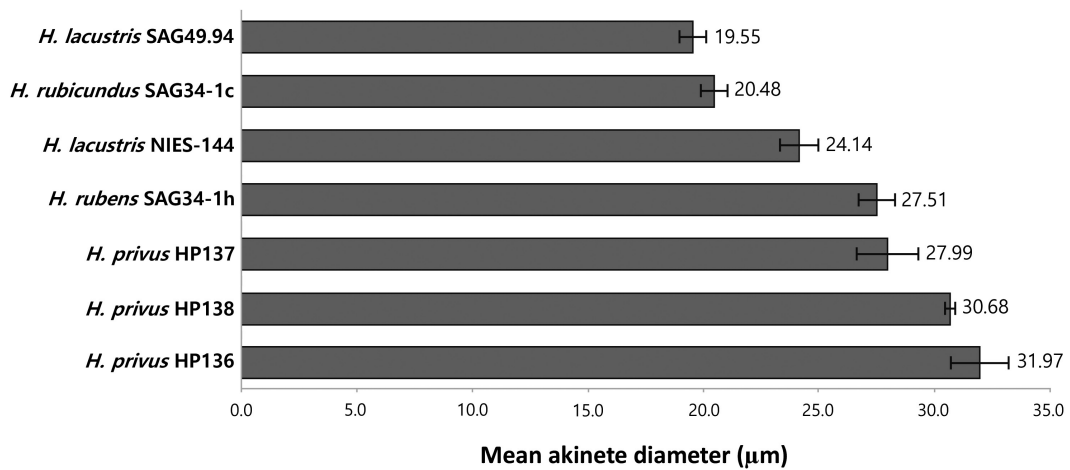


<table border="1"> <tr><td colspan="2">HP138 vs HP137</td></tr> <tr><td>Z</td><td>1.81271</td></tr> <tr><td>P (0.05) =</td><td>0.0703</td></tr> <tr><td>U</td><td>254.5</td></tr> </table>	HP138 vs HP137		Z	1.81271	P (0.05) =	0.0703	U	254.5	<table border="1"> <tr><td colspan="2">HP138 vs HP136</td></tr> <tr><td>Z</td><td>0.16721</td></tr> <tr><td>P (0.05) =</td><td>0.86502</td></tr> <tr><td>U</td><td>388</td></tr> </table>	HP138 vs HP136		Z	0.16721	P (0.05) =	0.86502	U	388	<table border="1"> <tr><td colspan="2">HP137 vs HP136</td></tr> <tr><td>Z</td><td>-1.71247</td></tr> <tr><td>P (0.05) =</td><td>0.08726</td></tr> <tr><td>U</td><td>798</td></tr> </table>	HP137 vs HP136		Z	-1.71247	P (0.05) =	0.08726	U	798																		
HP138 vs HP137																																												
Z	1.81271																																											
P (0.05) =	0.0703																																											
U	254.5																																											
HP138 vs HP136																																												
Z	0.16721																																											
P (0.05) =	0.86502																																											
U	388																																											
HP137 vs HP136																																												
Z	-1.71247																																											
P (0.05) =	0.08726																																											
U	798																																											
<table border="1"> <tr><td colspan="2">SAG 34-1h vs SAG 49.94</td></tr> <tr><td>Z</td><td>-7.6715</td></tr> <tr><td>P (0.05) <</td><td>0.00001</td></tr> <tr><td>U</td><td>0</td></tr> </table>	SAG 34-1h vs SAG 49.94		Z	-7.6715	P (0.05) <	0.00001	U	0	<table border="1"> <tr><td colspan="2">SAG 34-1h vs NIES144</td></tr> <tr><td>Z</td><td>6.2397</td></tr> <tr><td>P (0.05) <</td><td>0.00001</td></tr> <tr><td>U</td><td>40</td></tr> </table>	SAG 34-1h vs NIES144		Z	6.2397	P (0.05) <	0.00001	U	40	<table border="1"> <tr><td colspan="2">SAG 34-1h vs SAG 34-1c</td></tr> <tr><td>Z</td><td>-7.30481</td></tr> <tr><td>P (0.05) <</td><td>0.00001</td></tr> <tr><td>U</td><td>38</td></tr> </table>	SAG 34-1h vs SAG 34-1c		Z	-7.30481	P (0.05) <	0.00001	U	38	<table border="1"> <tr><td colspan="2">SAG 34-1h vs HP136</td></tr> <tr><td>Z</td><td>-6.29809</td></tr> <tr><td>P (0.05) <</td><td>0.00001</td></tr> <tr><td>U</td><td>170</td></tr> </table>	SAG 34-1h vs HP136		Z	-6.29809	P (0.05) <	0.00001	U	170	<table border="1"> <tr><td colspan="2">SAG 34-1h vs HP137</td></tr> <tr><td>Z</td><td>-6.16132</td></tr> <tr><td>P (0.05) <</td><td>0.00001</td></tr> <tr><td>U</td><td>156.5</td></tr> </table>	SAG 34-1h vs HP137		Z	-6.16132	P (0.05) <	0.00001	U	156.5
SAG 34-1h vs SAG 49.94																																												
Z	-7.6715																																											
P (0.05) <	0.00001																																											
U	0																																											
SAG 34-1h vs NIES144																																												
Z	6.2397																																											
P (0.05) <	0.00001																																											
U	40																																											
SAG 34-1h vs SAG 34-1c																																												
Z	-7.30481																																											
P (0.05) <	0.00001																																											
U	38																																											
SAG 34-1h vs HP136																																												
Z	-6.29809																																											
P (0.05) <	0.00001																																											
U	170																																											
SAG 34-1h vs HP137																																												
Z	-6.16132																																											
P (0.05) <	0.00001																																											
U	156.5																																											
<table border="1"> <tr><td colspan="2">SAG 34-1c vs SAG 49.94</td></tr> <tr><td>Z</td><td>6.19272</td></tr> <tr><td>P (0.05) <</td><td>0.00001</td></tr> <tr><td>U</td><td>207</td></tr> </table>	SAG 34-1c vs SAG 49.94		Z	6.19272	P (0.05) <	0.00001	U	207	<table border="1"> <tr><td colspan="2">SAG 34-1c vs NIES144</td></tr> <tr><td>Z</td><td>-0.43436</td></tr> <tr><td>P (0.05) =</td><td>0.66720</td></tr> <tr><td>U</td><td>544</td></tr> </table>	SAG 34-1c vs NIES144		Z	-0.43436	P (0.05) =	0.66720	U	544	<table border="1"> <tr><td colspan="2">SAG 34-1c vs HP136</td></tr> <tr><td>Z</td><td>3.73593</td></tr> <tr><td>P (0.05) =</td><td>0.00018</td></tr> <tr><td>U</td><td>547.5</td></tr> </table>	SAG 34-1c vs HP136		Z	3.73593	P (0.05) =	0.00018	U	547.5	<table border="1"> <tr><td colspan="2">SAG 34-1c vs HP137</td></tr> <tr><td>Z</td><td>-5.19515</td></tr> <tr><td>P (0.05) <</td><td>0.00001</td></tr> <tr><td>U</td><td>322.5</td></tr> </table>	SAG 34-1c vs HP137		Z	-5.19515	P (0.05) <	0.00001	U	322.5									
SAG 34-1c vs SAG 49.94																																												
Z	6.19272																																											
P (0.05) <	0.00001																																											
U	207																																											
SAG 34-1c vs NIES144																																												
Z	-0.43436																																											
P (0.05) =	0.66720																																											
U	544																																											
SAG 34-1c vs HP136																																												
Z	3.73593																																											
P (0.05) =	0.00018																																											
U	547.5																																											
SAG 34-1c vs HP137																																												
Z	-5.19515																																											
P (0.05) <	0.00001																																											
U	322.5																																											
<table border="1"> <tr><td colspan="2">NIES144 vs SAG 49.94</td></tr> <tr><td>Z</td><td>-5.9121</td></tr> <tr><td>P (0.05) <</td><td>0.00001</td></tr> <tr><td>U</td><td>90</td></tr> </table>	NIES144 vs SAG 49.94		Z	-5.9121	P (0.05) <	0.00001	U	90	<table border="1"> <tr><td colspan="2">NIES144 vs HP136</td></tr> <tr><td>Z</td><td>3.05659</td></tr> <tr><td>P (0.05) =</td><td>0.00222</td></tr> <tr><td>U</td><td>353</td></tr> </table>	NIES144 vs HP136		Z	3.05659	P (0.05) =	0.00222	U	353	<table border="1"> <tr><td colspan="2">NIES144 vs HP137</td></tr> <tr><td>Z</td><td>4.62109</td></tr> <tr><td>P (0.05) <</td><td>0.00001</td></tr> <tr><td>U</td><td>197</td></tr> </table>	NIES144 vs HP137		Z	4.62109	P (0.05) <	0.00001	U	197																		
NIES144 vs SAG 49.94																																												
Z	-5.9121																																											
P (0.05) <	0.00001																																											
U	90																																											
NIES144 vs HP136																																												
Z	3.05659																																											
P (0.05) =	0.00222																																											
U	353																																											
NIES144 vs HP137																																												
Z	4.62109																																											
P (0.05) <	0.00001																																											
U	197																																											
<table border="1"> <tr><td colspan="2">SAG 49.94 vs HP136</td></tr> <tr><td>Z</td><td>7.73842</td></tr> <tr><td>P (0.05) <</td><td>0.00001</td></tr> <tr><td>U</td><td>52</td></tr> </table>	SAG 49.94 vs HP136		Z	7.73842	P (0.05) <	0.00001	U	52	<table border="1"> <tr><td colspan="2">SAG 49.94 vs HP137</td></tr> <tr><td>Z</td><td>-7.7042</td></tr> <tr><td>P (0.05) <</td><td>0.00001</td></tr> <tr><td>U</td><td>32</td></tr> </table>	SAG 49.94 vs HP137		Z	-7.7042	P (0.05) <	0.00001	U	32																											
SAG 49.94 vs HP136																																												
Z	7.73842																																											
P (0.05) <	0.00001																																											
U	52																																											
SAG 49.94 vs HP137																																												
Z	-7.7042																																											
P (0.05) <	0.00001																																											
U	32																																											

Supplementary Fig. S4. Mann-Whitney U test: comparison of protoplast length to width ratios (motile cells). Between isolate comparisons involving *Haematococcus privus* isolates are highlighted in yellow. p-values for statistically significant ratio differences ($p < 0.05$) are presented in red; non-significant p-values for ratio differences are presented in green.



Supplementary Fig. S5. Mean akinete diameter. The error bars represent the standard error of the mean.